

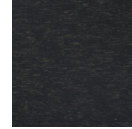
### Fiber Reinforced Molded Lumber

When greater structural strength and rigidity is required, Tangent's Fiber Reinforced Molded Lumber delivers the durability needed for heavy structural applications. Engineered from recycled HDPE, Fiber Reinforced Molded Lumber has UV inhibitors and strengthening fibers to maintain aesthetics and durability for decades to come.

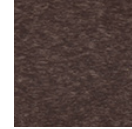
### Common Applications

- Marine Docks
- Trellises & Pergolas
- Playgrounds
- Site Amenities
- Boardwalk-Substructure
- Fencing
- Boardwalk-Decking
- Landscape Timbers

### Standard Colors



Black



Brown



Spice



Mink



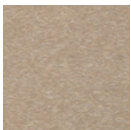
Redwood



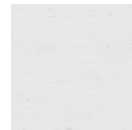
Cedar



Chestnut



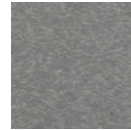
Norwegian  
Weatherwood



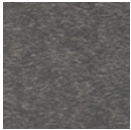
White



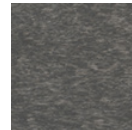
Cement



Gray



Dark Gray



Industrial  
Gray



Blue



Yellow



Green

## TECHNICAL INFORMATION

Properties	ASTM	Value/Units
Specific Gravity	D6111	0.93
Flexural Strength	D6109	2,750 psi
Flexural Modulus (Secant, at 1% strain)	D6109	306 ksi
Compressive Strength (Perpendicular to grain)	D6108	1,482 psi
Compressive Modulus (Perpendicular to grain, Secant, at 1% strain)	D6108	54 ksi
Coefficient of Thermal Expansion	D6341	0.000033 in/in/°F
Static Coefficient of Friction - Dry	D2394	0.39
Static Coefficient of Friction - Wet	D2394	0.38
Impact Resistance (Izod)	D256	2.64 ft-lb/in
Water Absorption	D570	0.27% max by weight
Screw Withdrawal	D6117	646 lbs
Useful Temperature Range		-40F to +140°F

Rev. 5/28/21

