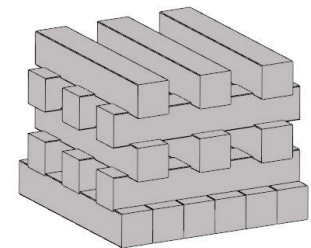
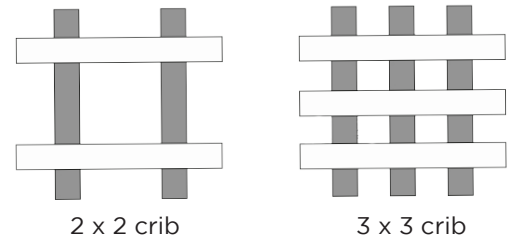


Superior Durability

Tangent's Molded and Reinforced Dimensional lumber excels for applications like cribbing and heavy dunnage. With Tangent cribbing, the days of dealing with oil soaked and stained wood cribbing are over. Resistant to moisture and insects, Tangent cribbing is a longer-lasting and low-maintenance solution that will not corrode, rot or decay. The superior durability of Tangent's Molded and Reinforced Dimensional lumber is the perfect fit for years of sustainable application use and a greater return on investment.

A General Guide for Tangent Cribbing

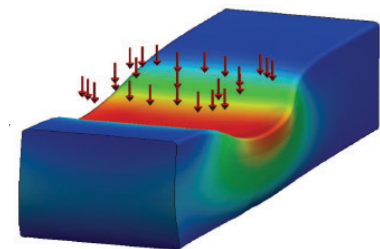
- Standard box cribbing consists of a 2 x 2 or a 3 x 3 configuration
- The corners should overlap by 1/2 to 1 times the block width
- The solid bottom section of a box crib can be used to spread the load on soft ground.
- The box cribbing height should be limited to 3 times the width.
- Non-square box cribbing such as a triangle or parallelogram should limit the height to 1 times the minimum width.
- We offer knurled surface texture in specific sizes and styles.



3 x 3 crib with a solid bottom row

Safe Failure Mode

- If Tangent's plastic lumber in a cribbing application is overloaded, the sides will bulge out. This is a warning sign that overloading is starting to happen, providing a safe failure mode.
- A typical wood overload condition happens without warning resulting in a catastrophic failure.



Nominal Size	Actual Dimensions (TYP)	Contact Dimension	Standard Capacity 2 x 2 (Tons)	Standard Capacity 3 x 3 (Tons)	Capacity (Tons per lineal foot)	Weight (Lbs. per foot)
2" x 2"	1 1/2" x 1 1/2"	1 3/8"	2.5	6	6	0.8
2" x 4"	1 1/2" x 3 1/2"	3"	13	30	13	2.0
4" x 4"	3 1/2" x 3 1/2"	3"	13	30	13	4.4
True 4" x 4"	4" x 4"	3 1/2"	18	40	15	5.4
5" x 5"	4 1/2" x 4 1/2"	4"	23	53	17	7.0
6" x 6"	5 1/2" x 5 1/2"	5"	36	83	22	9.7
8" x 8"	7 1/2" x 7 1/2"	7"	72	160	30	20
10" x 10"	9 7/8" x 9 7/8"	9 1/4"	125	280	40	36
12" x 12"	11 7/8" x 11 7/8"	11"	175	400	45	52